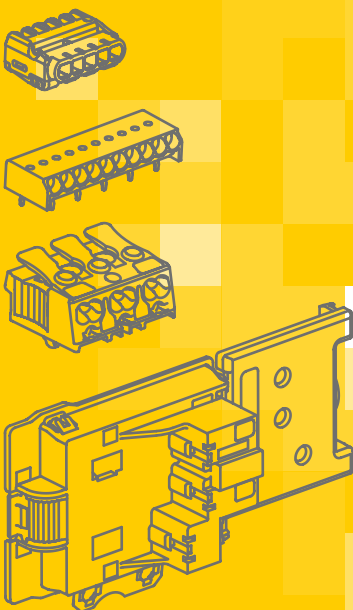


BETTER CONNECTIONS

Our components for success



ELECTRO-
TERMINAL



***We connect
with passion.***

Developing outstanding
solutions for your products
is our passion.



***We are your
specialists.***

We provide
perfect solutions for your
applications.



***We put
you first.***

We listen to
your needs and focus
on your requirements.

Quality and sustainability

Certified according to

- ISO 9001:2008 (Quality)
- ISO 14001:2004 (Environment)
- OHSAS 18001:2007
(Occupational Health & Safety)

Quality tools

- Lean Management
- Six Sigma

Participation in international committees

- Zhaga Consortium
- LINECT

Environmental conformity

- RoHS
- REACH

**Cooperation with
international testing laboratories,
e.g. UL, VDE, ÖVE etc.**

Connectors for Lighting Industry



Terminal blocks for luminaires



SLK 7

Our "super flat one"

- $W \times H = 27 \text{ mm} \times 11 \text{ mm}$
- Super flat. Only 11 mm high.
- 5 poles for power supply and DALI
- Different fixing & earthing options



SLK 5

Miniaturised screwless power supply connector for light fittings

- $W \times H = 27 \text{ mm} \times 19 \text{ mm}$
- Two earthing variants
- Also available for protection class II applications



LBK system

- 5-, 7- and – NEW! – 11-pole through-wiring units
- Socket
- Plug
- Axial connector

PCB terminals



MICROCON SMD PURE

Our "naked solution" for horizontal or vertical connection; without plastic housing



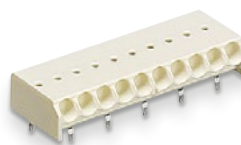
MICROCON SMD

Our "little one", SMD



MICROCON SMDP

Our "strong one" for direct mains voltage supply



MICROCON

Terminal for electronic control gear

- Low profile design, 6.5 mm without solder pins
- Wires can be released by a tool.
- Kinked solder pins



PKL

Universal PCB connector

- Wires can be released easily by means of a release lever.
- For rigid and flexible wires
- Internally connected poles available



See our PCB terminals on YouTube

Electrical Installation Material



SDKF

Universal wire connector

- For rigid and flexible wires
- With 2, 3 or 5 terminals
- Several wire cross-sections can be combined in one connector.



See our SDKF
on YouTube

SDK

Screwless junction box connector

- For rigid wires
- Wires can be released by twisting and pulling.
- Easy to push in – high pull-out force



EKL

The versatile European terminal strip

- Five different sizes
- Available as polyamide or polypropylene model
- Also available with raised base or wire protection



FD

Damp-proof junction boxes

- IP 54
- Three different sizes

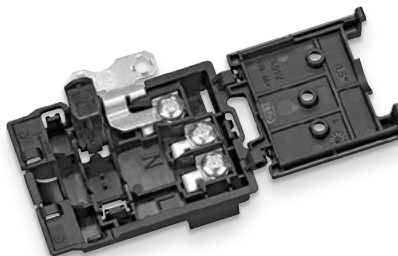
Terminal Blocks for Appliances



KADO 2/3 OS

Now with opened screws

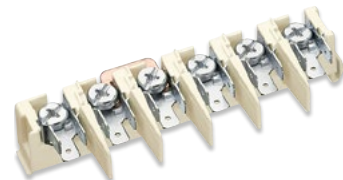
- Quick and safe contacting
- Screwless strain relief
- Internal and external earthing



KADO FL

As flat as can be

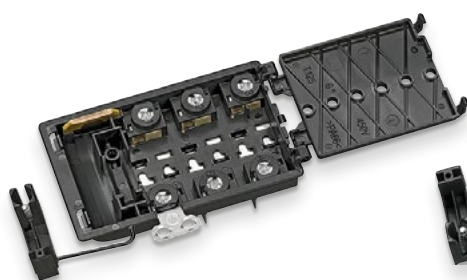
- Screwless strain relief
- Two angled fastons per pole
- Simple cutout



SFK

Many features to choose from

- Snap-in foot or screw fixation
- Torx or slotted screws
- Two new earth-tag variants available



KADO XT

Flat cable connection box with three phases

- 5- or 6-pole model
- Robust strain relief, screw-fastened
- Three or four fastons per pole



KADO XM

Great dimensions, great capacity

- Large clamping range, open cage
- Eight fastons per pole
- Parking position for strain relief



FKL

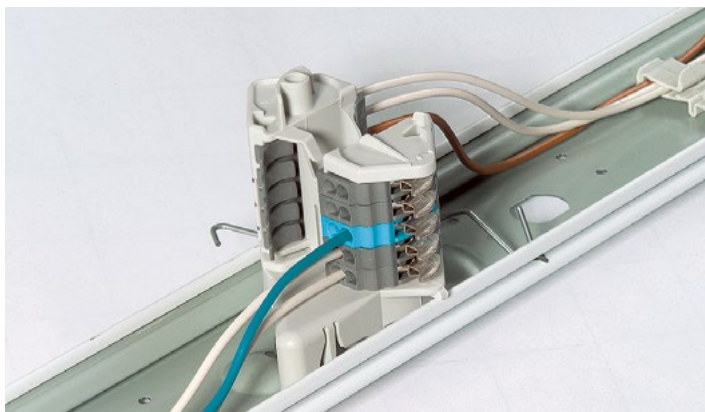
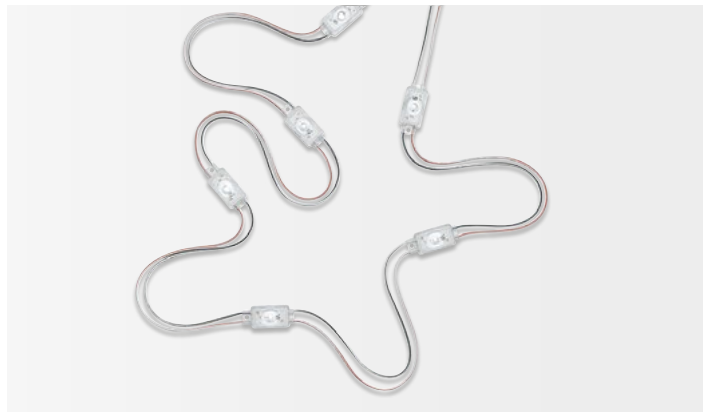
Screw-tab terminal blocks

- 2–12 poles upon request
- Earth tag and terminal bridges upon request

At Electro Terminal we are recognized for our expertise in developing customized solutions. Every project is managed by a specially assigned project team that is able and ready to meet individual customer requirements.

We are able to fulfill special requests, including:

- packaging
- materials
- variants
- colours



Contact

Electro Terminal GmbH & Co KG
Archenweg 58 | 6020 Innsbruck | Austria
T +43 512 3321 | F +43 512 3321-182
www.electroterminal.com
office@electroterminal.com



wechat



electroterminal.com

